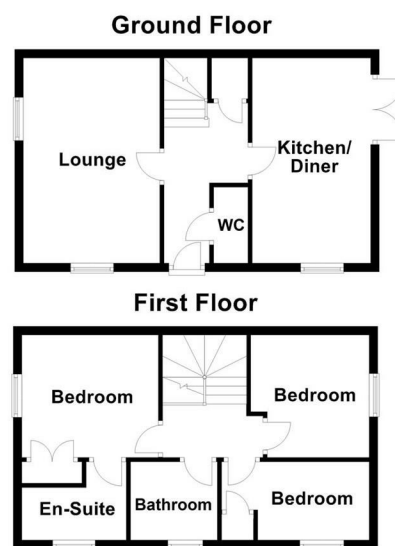


20 Manderville Close, Northampton, NN3 6QE



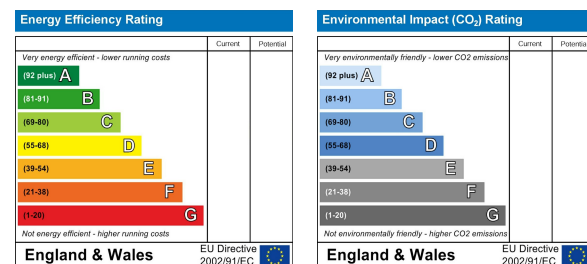
£325,000 Freehold

A very well presented modern three bedroom link detached property situated in a quiet and sought after cul de sac in the popular residential area of Spinney Hill. The accommodation comprises entrance hall, cloakroom, lounge, kitchen/diner. To the first floor are three bedrooms with en-suite to bedroom one and a family bathroom. Outside is a front garden and driveway giving off road parking and leading to the detached garage. The good size rear garden is mainly laid to lawn and enjoys a sunny aspect and a high degree of privacy,



Not to scale. For illustrative purposes only

You may download, store and use the material for your own personal use and research. You may not republish, retransmit, redistribute or otherwise make the material available to any party or make the same available on any website, online service or bulletin board of your own or of any other party or make the same available in hard copy or in any other media without the website owner's express prior written consent. The website owner's copyright must remain on all reproductions of material taken from this website.



20 Manderville Close, Northampton, NN3 6QE

ACCOMMODATION

ENTRANCE HALL

LOUNGE

15'6 x 10'4



KITCHEN/DINER

15'6 x 9'0



FIRST FLOOR LANDING

BEDROOM ONE

10'5 x 8'9



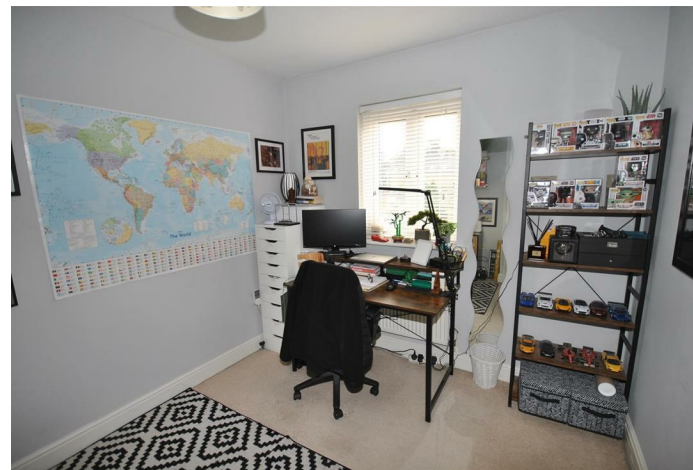
EN-SUITE

8'1 x 6'3



BEDROOM TWO

8'8 x 8'3



BEDROOM THREE

11' 5 x 6'7



BATHROOM



OUTSIDE

FRONT GARDEN

REAR GARDEN

DETACHED GARAGE

SERVICES

COUNCIL TAX

LOCAL AMENITIES

HOW TO GET THERE

For further information on viewing call 01604 230222